

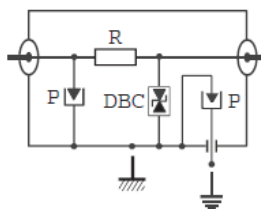
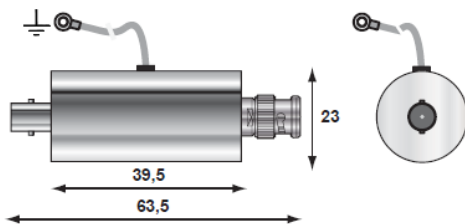
# CCTV SPD



- Coaxial SPD 70 MHz
- Low insertion loss
- easy mounting

## Specifications

Designation	CCTV SPD
Part number	P8603
Frequency	DC – 70 MHz
Insertion loss	< 0.6 dB
Return Loss	> 20 dB
Stationary wave rate	< 1.2 : 1
Discharge current(8/20 $\mu$ s) max. I <sub>max</sub> in wave 8/20 $\mu$ s	10kA
Powermax.	100W
Current max.	6A
Impedance	50 ohms
Mechanical characteristics	
connectivity	BNC, F
Ground connection	Wire
Ingress Protection	IP65
Operating Temperature	-40°C à +85°C



P: Spark Gap  
 DBC: Clamping Diode  
 R: Resistor