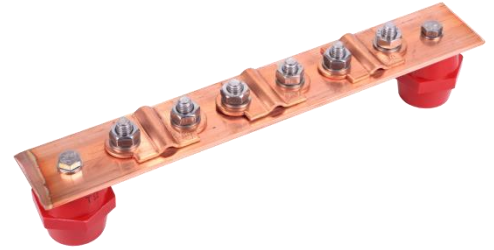
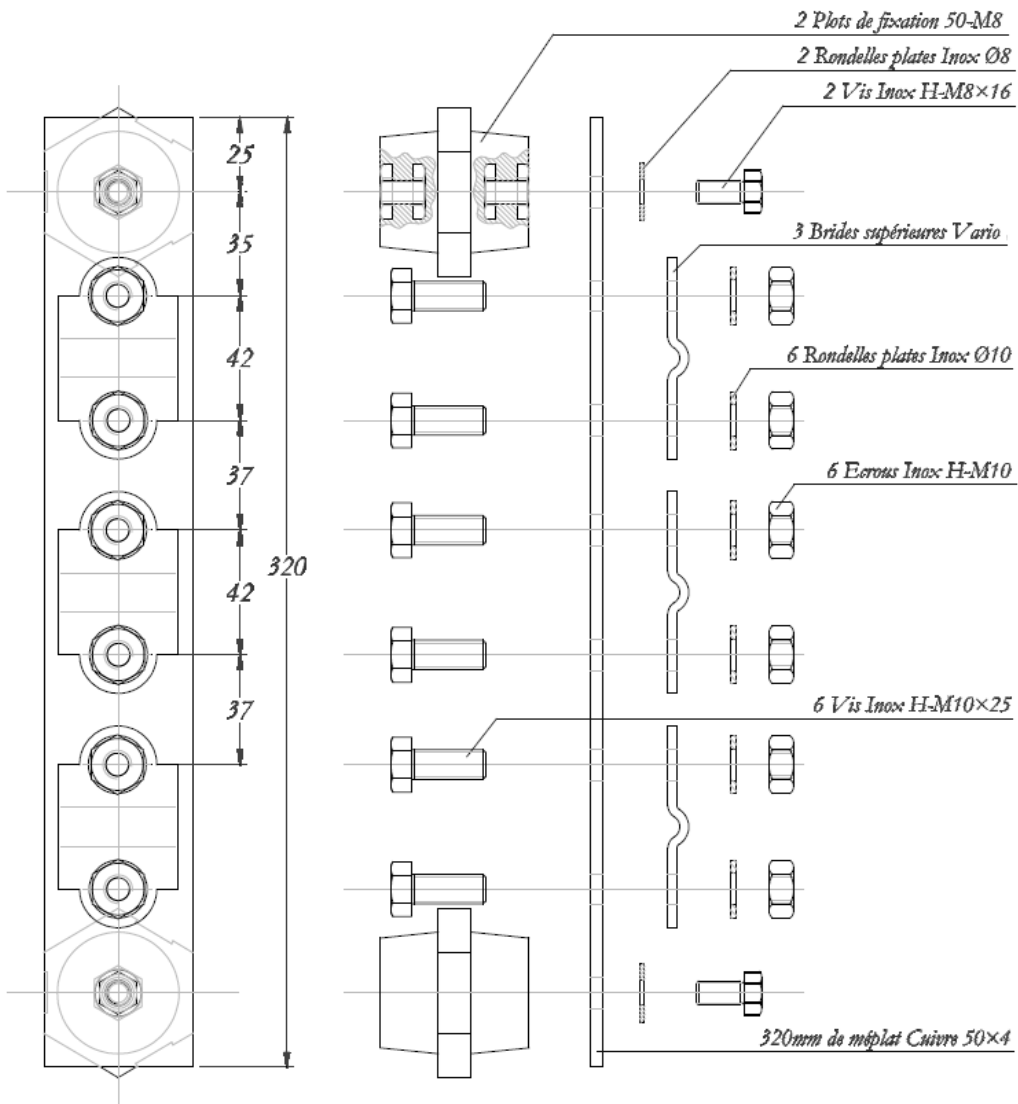


Copper Earth Bar – 3 way

Characteristics	P7053
Material	Copper
Weight(Kg)	1.25
Application	The earth bar is used to connect different earth conductors or metallic masses together. There are 6 welded bolts (M10) which allow 6 conductors to be connected by lugs (not supplied). There are also 3 back plates allowing 3 separate 30x2 mm tape conductor to be connected without the need for drilling.



Dimensions (mm)



DOC223a.VEN-Rev0

