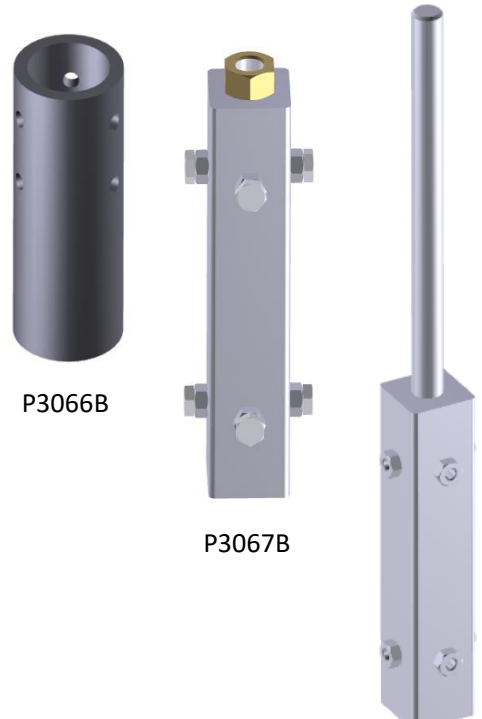


# Adapter Sleeve

Characteristics	P3066B	P30637B	P3068A
Material	brass		
Weight (kg)	0.735	1.135	2.295
Height (mm)	100	250	550
Ø max(mm)	200	200	250
Application	Fixing a lightning conductor on a Round or square shaft		



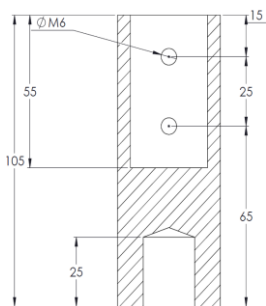
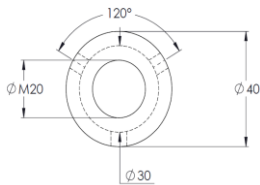
P3066B

P3067B

P3068A

## Dimensions (mm)

P3066B



P3067B

