

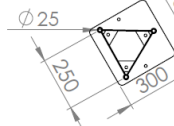
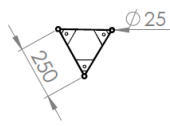
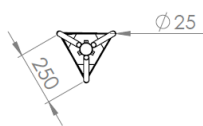
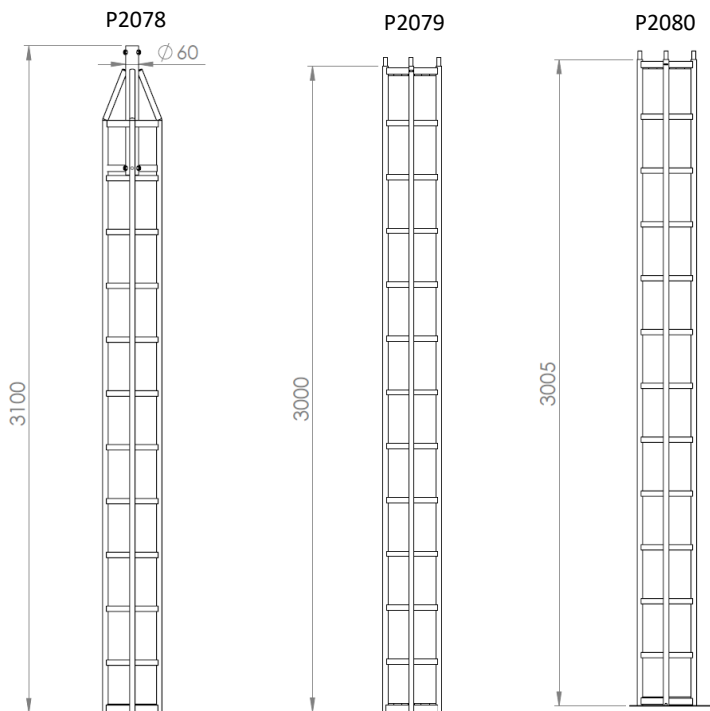
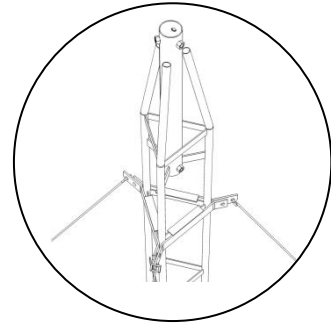
PH30 Guyed Towers

Made from dip-galvanized steel, and designed to receive guy wires, these towers come in 3 m sections, 23 cm wide. The sections are M12 bolted (included) together at the joints and the base can be supplied either with a spike or a flat base section for ground mounting.

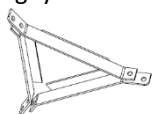
Guy wires are needed every 3 or 6 m on three guy anchors fixed at ground level at a distance from the base equal to half the height of the tower.

A lightning rod fixing pole can be installed at the top of the tower (Ref P2001B).

Designation	Ref.	Height	Weight
Upper section – PH30	P2078	3 m	17 kg
Mid section – PH30	P2079	3 m	15 kg
Base section with spike – PH30	P2080	3 m	17 kg
Stainless steel cable Ø4mm –100m coil	CAI4	-	-
Stainless Steel turnbuckle 4mm	SCI4	-	-
Stainless Steel Thimble 4mm	CCI4	-	-

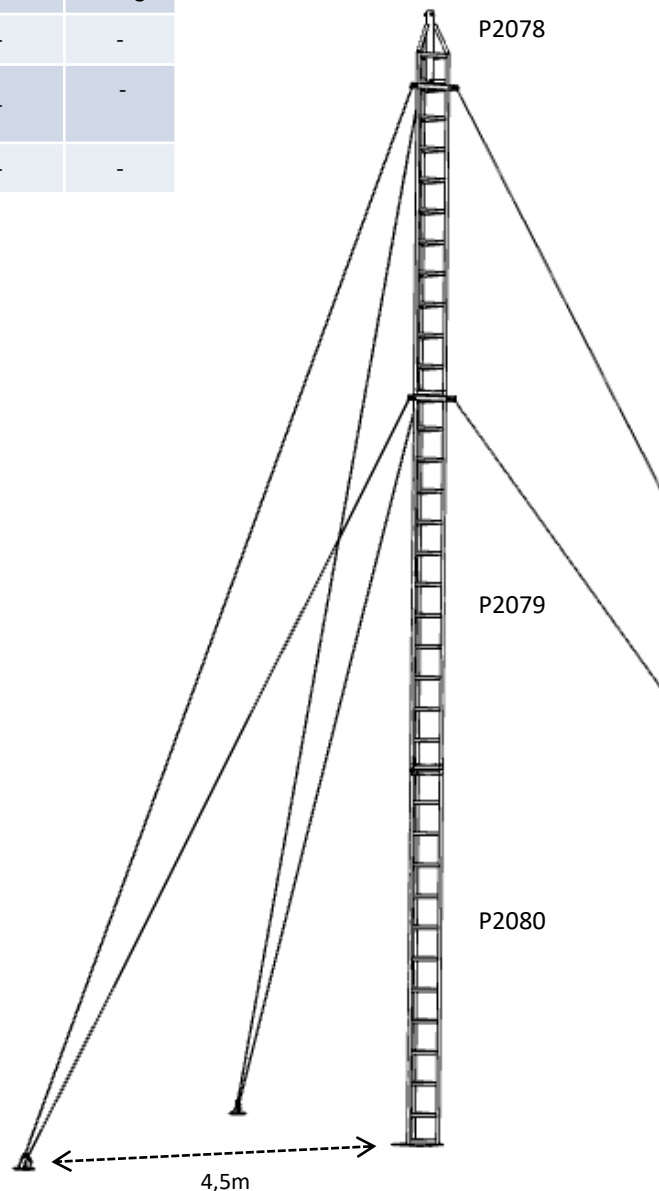


Accessory: P2083 guy wire fixing triangle



P2088

P2089



Mounting: 9m tower with guy wires

DOC261a.VEN-Rev1

