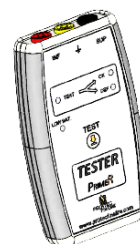


# PRIMER® HERITAGE BUILDING EARLY STEAMER EMISSION AIR TERMINAL (ESE)

Reference	P1314	
<b>Characteristics</b>		
Efficiency	$\Delta T$	60 $\mu s$
Standard deviation ESE / Single Rod	$\sigma$	$\sigma_{PDA} < 0,8 \sigma_{PTS}$
Lightning current withstanding test (10/350 $\mu s$ )	$I_{imp}$	100 kA (normative test)
Technology	<p>tip electronic variation technology-powered Early Steamer Emission lightning rod:</p> <ul style="list-style-type: none"> <li>electronically controlled variation of the tip shape (patented technology)</li> <li>Fully autonomous system requiring no external power supply.</li> <li>lightning rod optimum efficiency ensured by the synchronization of its operation with the lightning phenomenon.</li> <li>Full electrical continuity (continuous central rod)</li> </ul>	
On-site testing capabilities	Proprietary tester	
Warranty	5 years	
<b>Mechanical specifications</b>		
Central rod	200mm <sup>2</sup> section – Copper	
Metal housing	Copper coated steel, EMC shielding	
Fixing on pole	M20 Thread	
Down conductor connection	Specific clamp included	
Gross Weight	2,650 kg	
<b>Certifications</b>		
NF C 17 102:2011, Annex C	Attestation de conformité N°CEI000152	
Qualifoudre	Ineris Certificate N° N°051166662001	

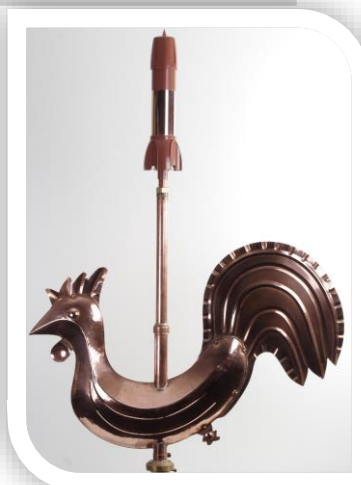
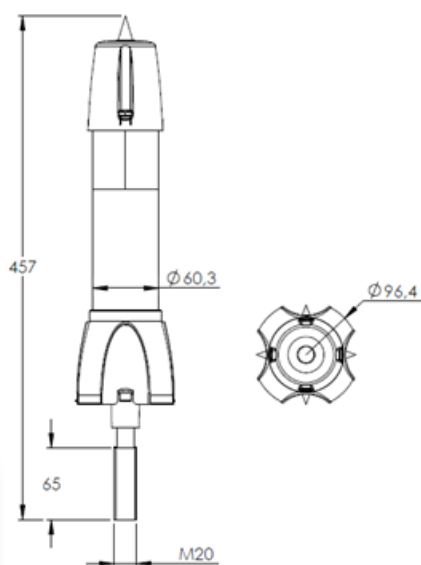


Continuous central rod



Tester

Dimensions (mm)



Application

PrimeR Heritage Building on copper Ornament  
Cock « Louis » ref. P10.014

des postes 59500 DOUAI (FRANCE) - Tel +33 327 944 944  
www.indelec.com

