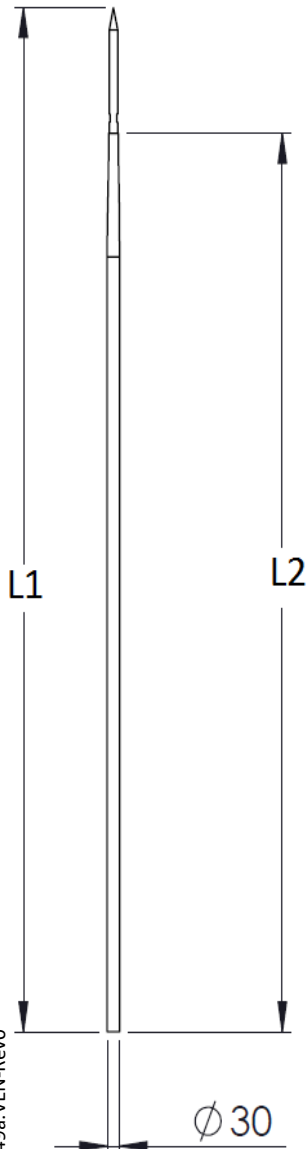


Single Rods

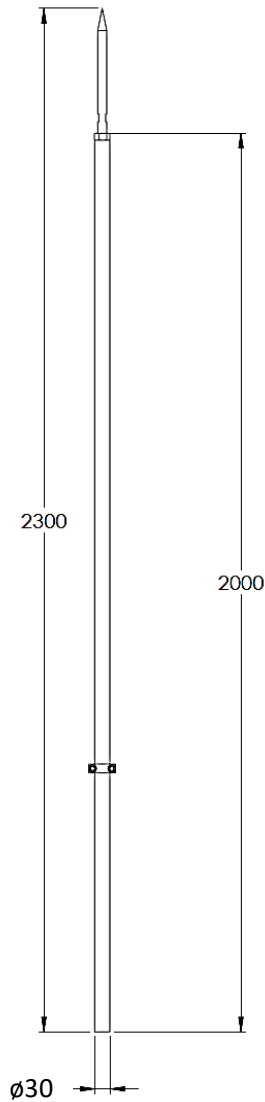
Characteristics	P1021B	P1022B	P1031D
Material	Chromium plated copper		Stainless steel
L1 (mm)	2300 mm	1300 mm	2300 mm
L2 (mm)	2000 mm	1000 mm	2000 mm
Weight (kg)	3.500	2.340	3.000
Connection	With a connecting clamp ref. P3095 / P3096 (not included)		connecting clamp included
Standard	EN 62561-2		

Dimensions (mm)

P1021B-P1022B



P1031D

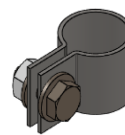


Ref. P1022B

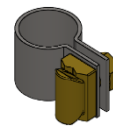
Ref. P1021B

Ref. P1031D

Accessories



Ref. P3095
Rod to flat conductor
connecting clamp



Ref. P3096
Rod to round conductor
connecting clamp



Ref. P1031D
connecting clamp for flat
conductor included

DOC149a.VEN-Rev0

