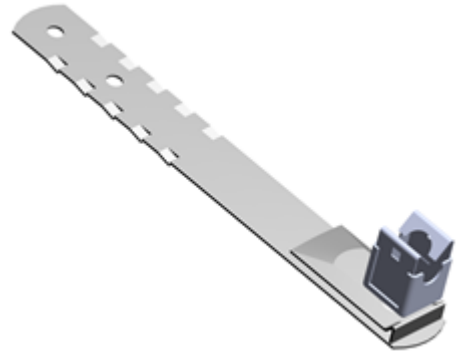


# Stainless Steel Slate Holdfast for round conductor

Characteristics	P6110
Material	Stainless Steel
Weight (kg)	0.075
Conductor	Round, $\varnothing$ 6 to 10 mm
Application	Used to fix round conductor on a slate roof.
Fixing	The mounting is locked/screwed/folded in between two tiles
Standard	EN 62561-4



## Dimensions (mm)

